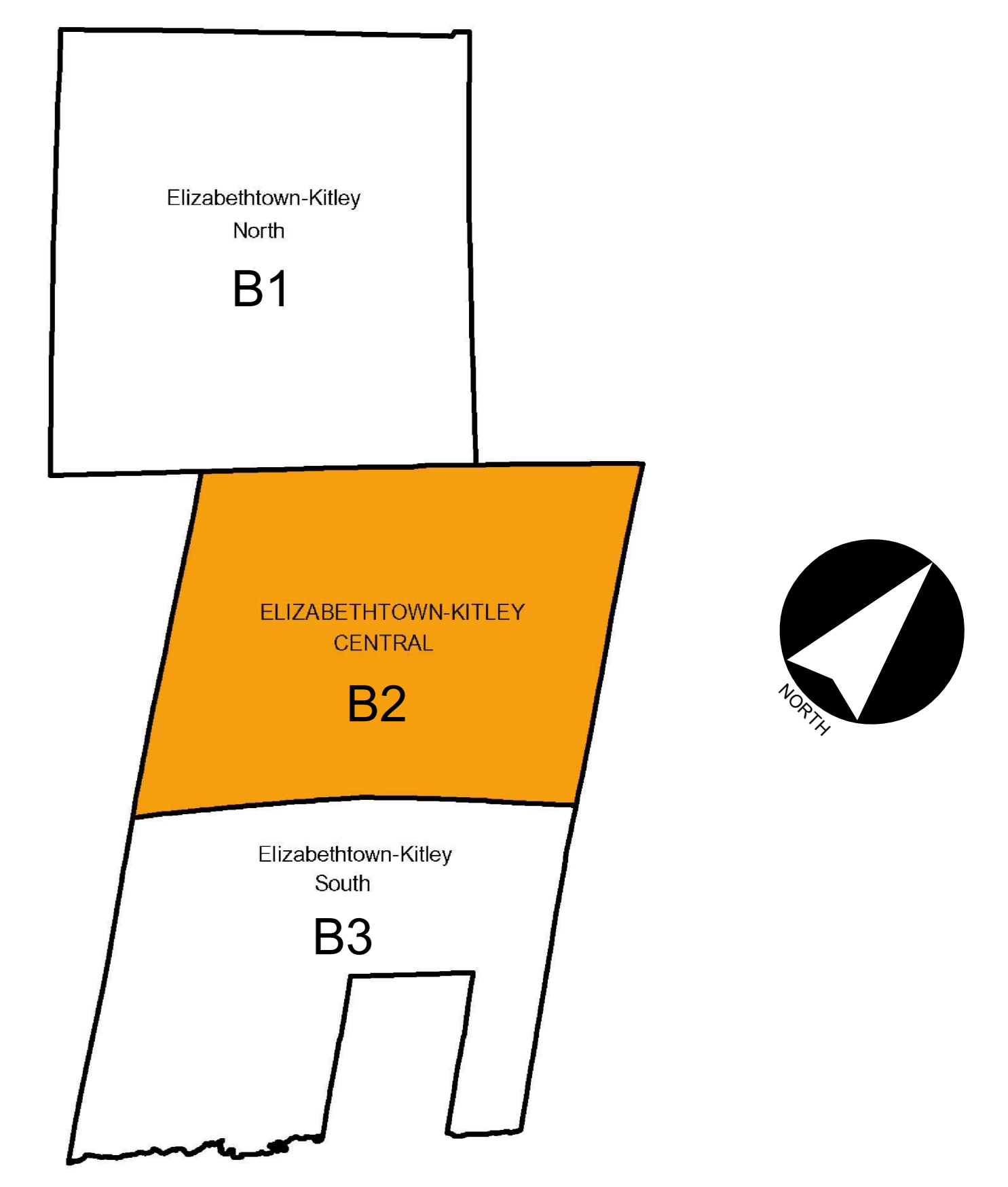


OFFICIAL PLAN

SCHEDULE B2 - DEVELOPMENT CONSTRAINTS ELIZABETHTOWN-KITLEY CENTRAL

KEY PLAN



CONSTRAINTS

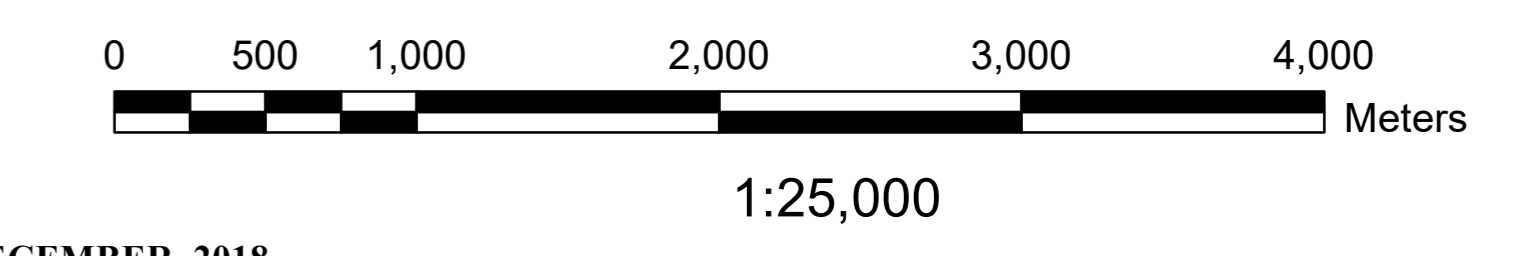
- Significant Woodlands
- Open Waste Disposal Site
- Closed Waste Disposal Site
- Abandoned Mines & Mineral Resource Operations
- Organic Soils
- Permanently Wet Areas
- Extreme Wildland Fire Potential
- Settlement Area

Intake Protection Zones

- IPZ-1 (Intake Protection Zone 1)
- IPZ-2 (Intake Protection Zone 2)
- Brockville Source Water (Drinking Water) Intake

ROADS

- Provincial Highway
- County Road
- Township Road
- Private Road
- Abandoned Railway
- Active Railway

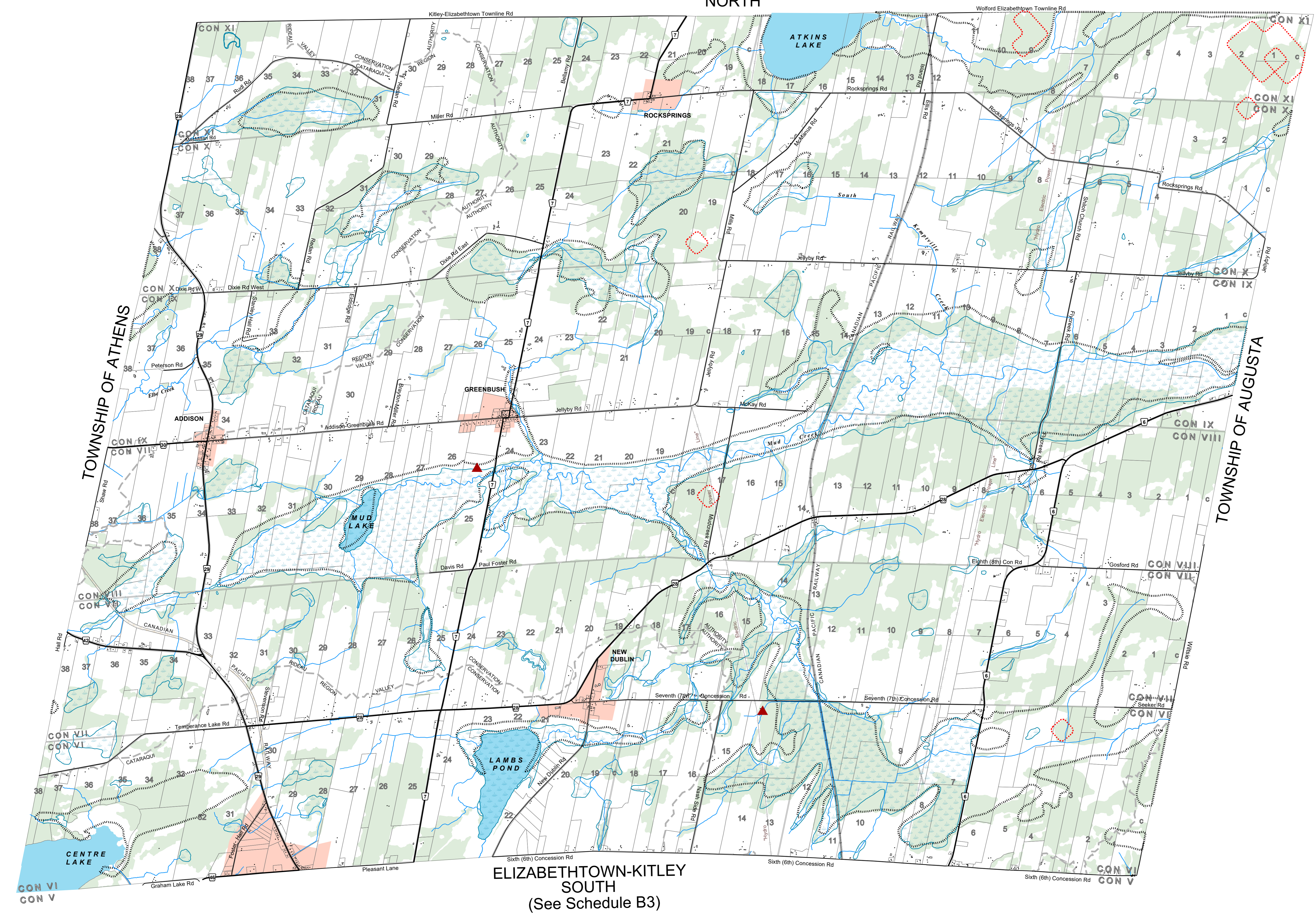


ISSUE DATE: DECEMBER, 2018

NOVATECH
Engineers, Planners & Landscape Architects
Suite 200, 240 Michael Cowpland Drive
Ottawa, Ontario, Canada
K2M 1P6
Telephone (613)254-9643
Facsimile (613)254-5867
www.novatech-eng.com

THIS PLAN IS BASED UPON INFORMATION OBTAINED IN MAY 2017 THROUGH A DIGITAL DATA RELEASE AGREEMENT WITH THE UNITED COUNTIES OF LEEDS & GREENVILLE AND INCLUDES DATA FROM THE PROVINCE OF ONTARIO'S ONTARIO GEOSPATIAL DATA EXCHANGE DATABASE (LAND INFORMATION ONTARIO), MUNICIPAL PROPERTY ASSESSMENT CORPORATION AND TERANET INC.

(See Schedule B1)
ELIZABETHTOWN-KITLEY
NORTH



ELIZABETHTOWN-KITLEY
SOUTH
(See Schedule B3)

Printed: December 17, 2018 11:56:58 AM. All rights reserved. No part of this publication may be reproduced without the prior written permission of Novatech Engineering, Planners & Landscape Architects.