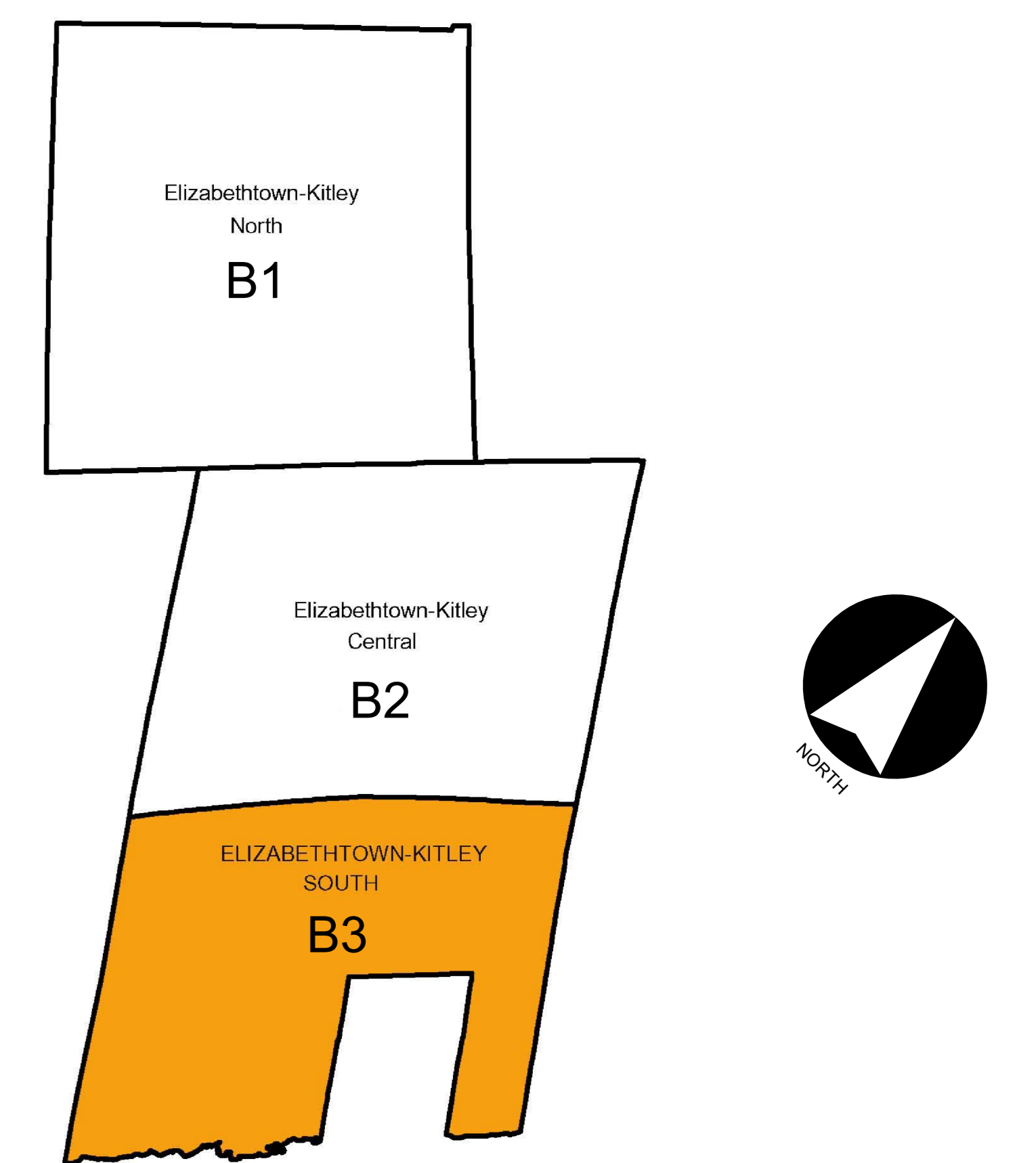


OFFICIAL PLAN

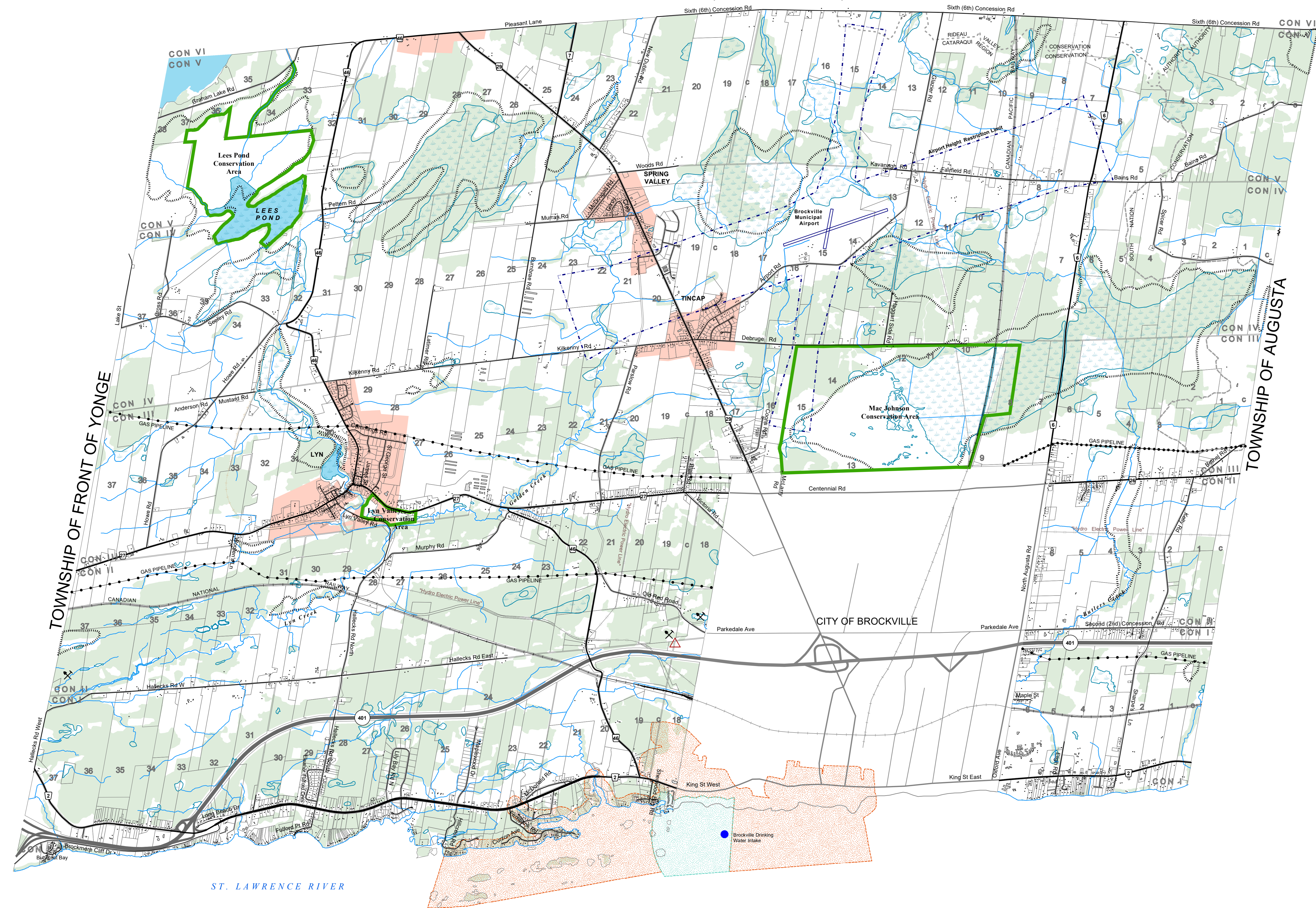
SCHEDULE B3 - DEVELOPMENT CONSTRAINTS

ELIZABETHTOWN-KITLEY SOUTH

KEY PLAN



ELIZABETHTOWN-KITLEY CENTRAL
(See Schedule B2)



CONSTRAINTS

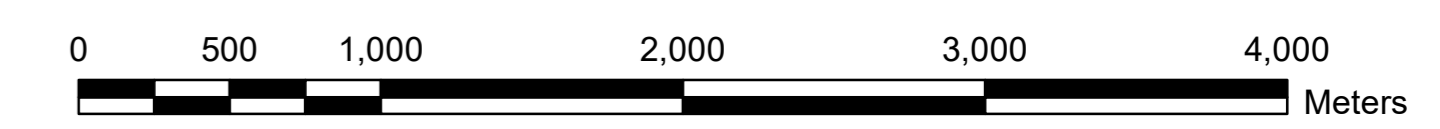
- Significant Woodlands
- Open Waste Disposal Site
- Closed Waste Disposal Site
- Abandoned Mines & Mineral Resource Operations
- Organic Soils
- Permanently Wet Areas
- Extreme Wildland Fire Potential
- Settlement Area

Intake Protection Zones

- IPZ-1 (Intake Protection Zone 1)
- IPZ-2 (Intake Protection Zone 2)
- Brockville Source Water (Drinking Water) Intake

ROADS

- Provincial Highway
- County Road
- Township Road
- Private Road
- Abandoned Railway
- Active Railway



1:25,000

ISSUE DATE: DECEMBER, 2018

NOVATECH
 Engineers, Planners & Landscape Architects
 Suite 200, 240 Michael Cowpland Drive
 Ottawa, Ontario, Canada
 K2M 1P6
 Telephone (613)254-9643
 Facsimile (613)254-5867
 www.novatech-eng.com

THIS PLAN IS BASED UPON INFORMATION OBTAINED IN MAY 2017 THROUGH A DIGITAL DATA RELEASE AGREEMENT WITH THE UNITED COUNTIES OF LEEDS & GREENVILLE AND INCLUDES DATA FROM THE PROVINCE OF ONTARIO'S ONTARIO GEOSPATIAL DATA EXCHANGE DATABASE (LAND INFORMATION ONTARIO), MUNICIPAL PROPERTY ASSESSMENT CORPORATION AND TERANET INC.

NOTE: FOR LANDS ALONG THE ST. LAWRENCE RIVER, THE LIMIT OF THE NATURAL HAZARD DESIGNATION SHALL BE THE 75.8m (IGSC) ELEVATION. FOR DETAILED INFORMATION WITH RESPECT TO 1:100YR FLOOD PLAIN LIMITS, SEE THE RELEVANT SECTIONS OF THE OFFICIAL PLAN & CONSULT DIRECTLY WITH THE CATARAQUI REGION CONSERVATION AUTHORITY.