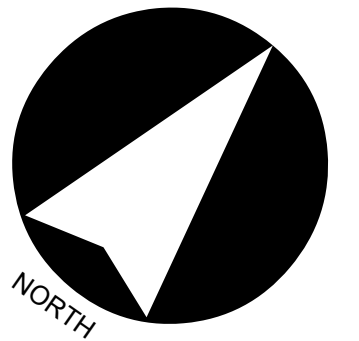


OFFICIAL PLAN

APPENDIX A

ELIZABETHTOWN-KITLEY

Wildland Fire Hazard Potential



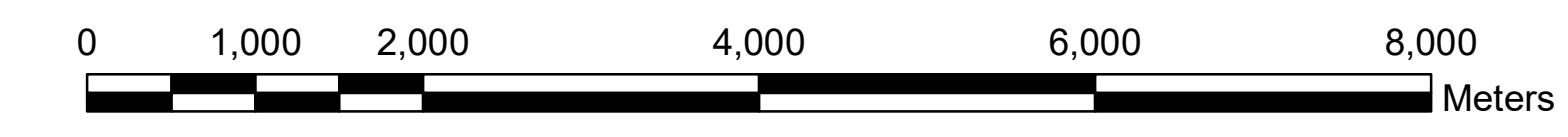
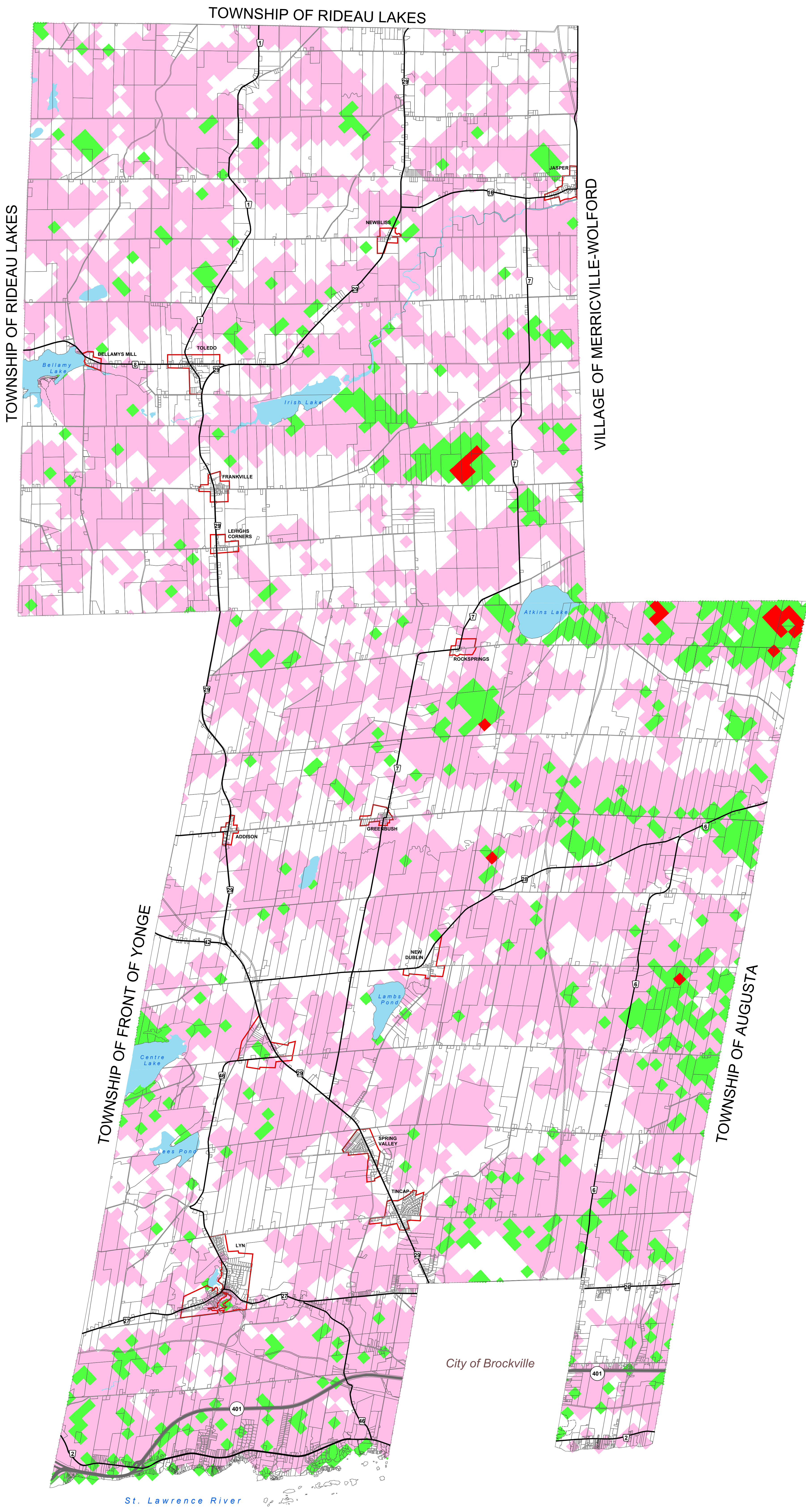
Classification for Potential Wildland Fires

- Extreme
- High
- Moderate
- Low
- Unclassified

- Settlement Area

ROADS

- Provincial Highway
- County Road
- Township Road
- Private Road
- Railway



1:45,000

ISSUE DATE: DECEMBER, 2018

NOVATECH
 Engineers, Planners & Landscape Architects
 Suite 200, 240 Michael Cowpland Drive
 Ottawa, Ontario, Canada
 K2M 1P6
 Telephone (613)254-9643
 Facsimile (613)254-5867
 www.novatech-eng.com

THIS PLAN IS BASED UPON INFORMATION OBTAINED IN MAY 2017 THROUGH A DIGITAL DATA RELEASE AGREEMENT WITH THE UNITED COUNTIES OF LEEDS & GRENVILLE AND INCLUDES DATA FROM THE PROVINCE OF ONTARIO'S ONTARIO GEOSPATIAL DATA EXCHANGE DATABASE (LAND INFORMATION ONTARIO), MUNICIPAL PROPERTY ASSESSMENT CORPORATION AND TERANET INC.

Prepared: December 17, 2018, 10:53 am. \\s021111002\GIS\Projects\OP\GIS\Map\181217_1053\Map181217_1053.mxd. Uploaded by: W. Bissell