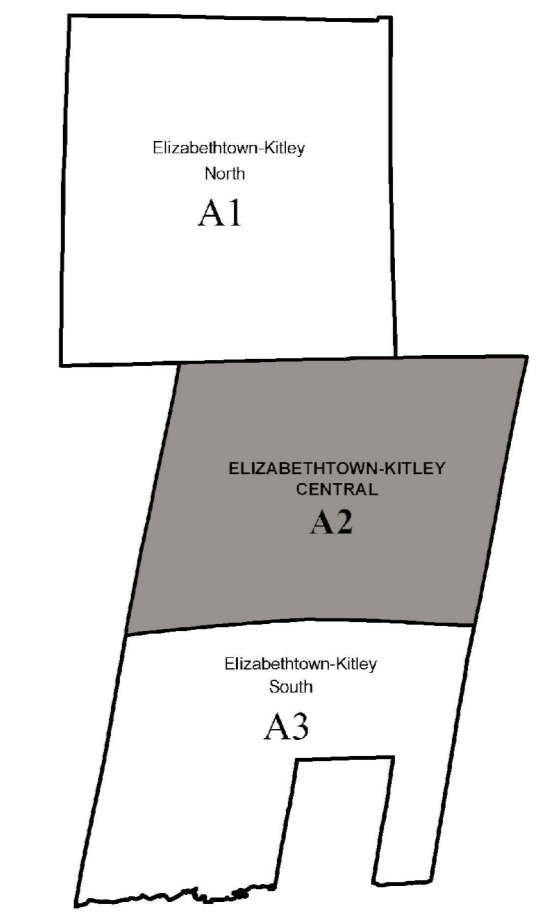


ZONING BY-LAW NO. 13-21

SCHEDULE A2 ELIZABETHTOWN-KITLEY CENTRAL

KEY PLAN



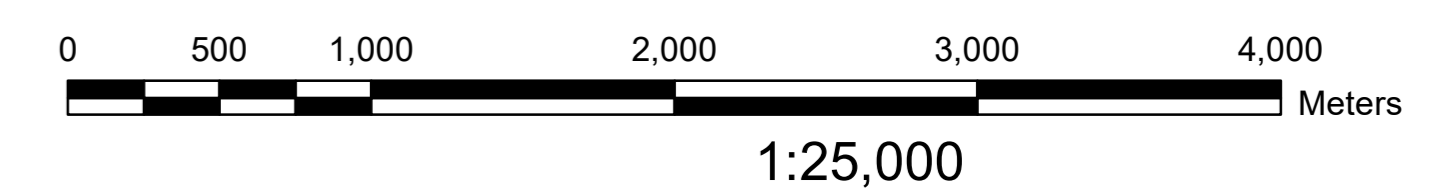
ZONES

R1	RESIDENTIAL TYPE 1	MD	DISPOSAL INDUSTRIAL
R2	RESIDENTIAL TYPE 2	MBP	BUSINESS PARK INDUSTRIAL
RLS	LIMITED SERVICES RESIDENTIAL	MAP	AIRPORT INDUSTRIAL
RMH	MOBILE HOME PARK RESIDENTIAL	MR	RURAL INDUSTRIAL
RE	ESTATE RESIDENTIAL	I	INSTITUTIONAL
CG	GENERAL COMMERCIAL	OS	OPEN SPACE
CL	LOCAL COMMERCIAL	RU	RURAL
CT	TOURIST COMMERCIAL	AG	AGRICULTURE
CR	RURAL COMMERCIAL	EX-P	MINERAL AGGREGATE EXTRACTION - PIT
MG	GENERAL INDUSTRIAL	EX-Q	MINERAL AGGREGATE EXTRACTION - QUARRY
MS	SALVAGE YARD INDUSTRIAL	EP-PSW	ENVIRONMENTAL PROTECTION - PSW
	SETTLEMENT AREA DESIGNATION FROM OFFICIAL PLAN	EP-ANSI	ENVIRONMENTAL PROTECTION - ANSI
	PERMANENTLY WET AREA FROM OFFICIAL PLAN	EP-LSW	ENVIRONMENTAL PROTECTION - LSW
		FP	FLOOD PLAIN

NOTE:
ALL ISLANDS ZONED RLS
UNLESS OTHERWISE INDICATED

ROADS

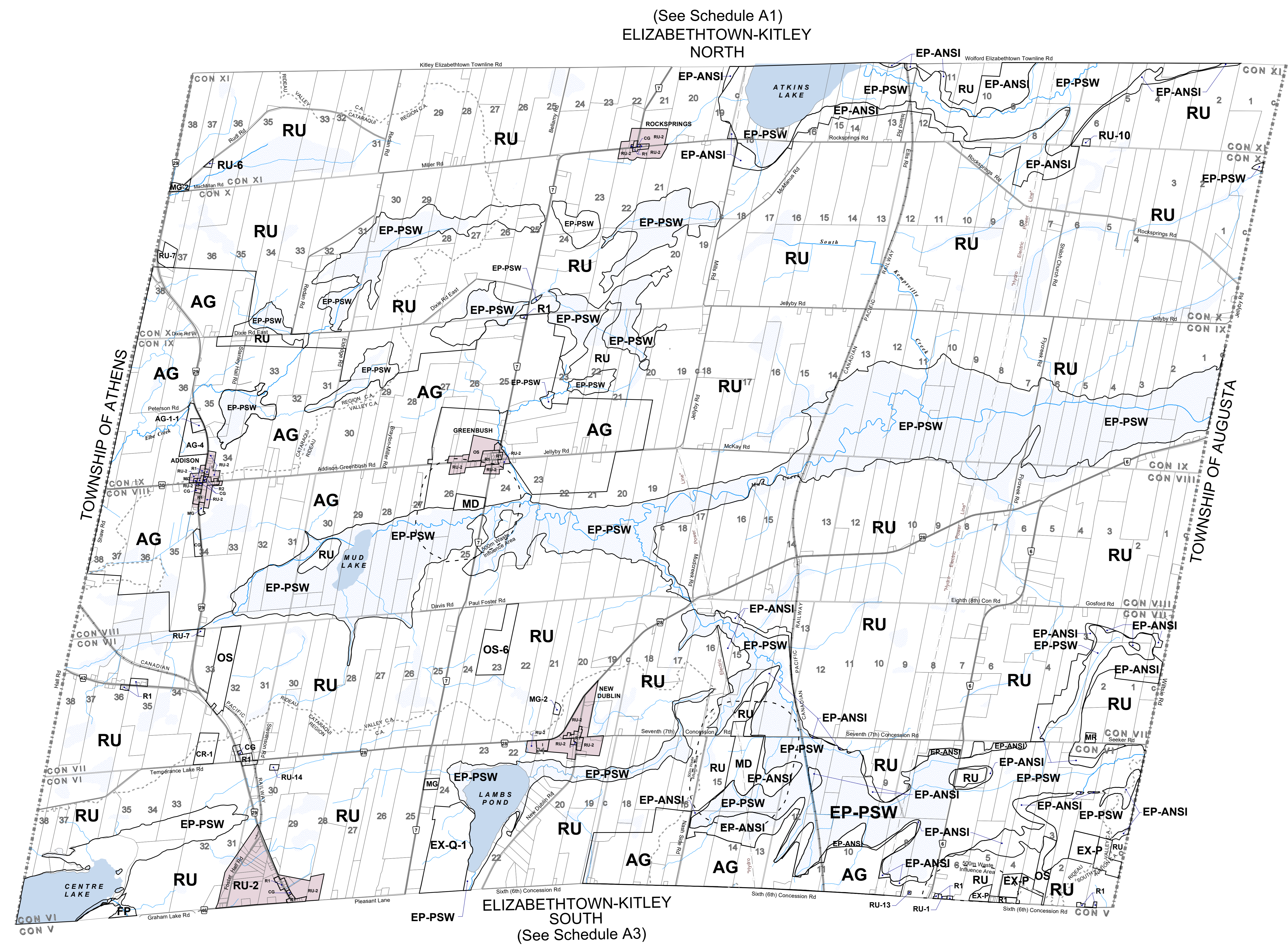
- PROVINCIAL HIGHWAY
- COUNTY ROAD
- TOWNSHIP ROAD
- PRIVATE ROAD



ISSUE DATE: Office Consolidation October 01, 2022

NOVATECH
Engineers, Planners & Landscape Architects
Suite 200, 240 Michael Cowpland Drive
Ottawa, Ontario, Canada
K2M 1P6
Telephone (613)254-9643
Facsimile (613)254-5867
www.novatech-eng.com

THIS PLAN IS BASED UPON INFORMATION OBTAINED IN MAY 2017 THROUGH A DIGITAL DATA RELEASE AGREEMENT WITH THE UNITED COUNTIES OF LEEDS & GRENVILLE AND INCLUDES DATA FROM THE PROVINCE OF ONTARIO'S ONTARIO GEOSPATIAL DATA EXCHANGE DATABASE (LAND INFORMATION ONTARIO), MUNICIPAL PROPERTY ASSESSMENT CORPORATION AND TERANET INC.



(See Schedule A1)
ELIZABETHTOWN-KITLEY
NORTH

ELIZABETHTOWN-KITLEY
SOUTH
(See Schedule A3)