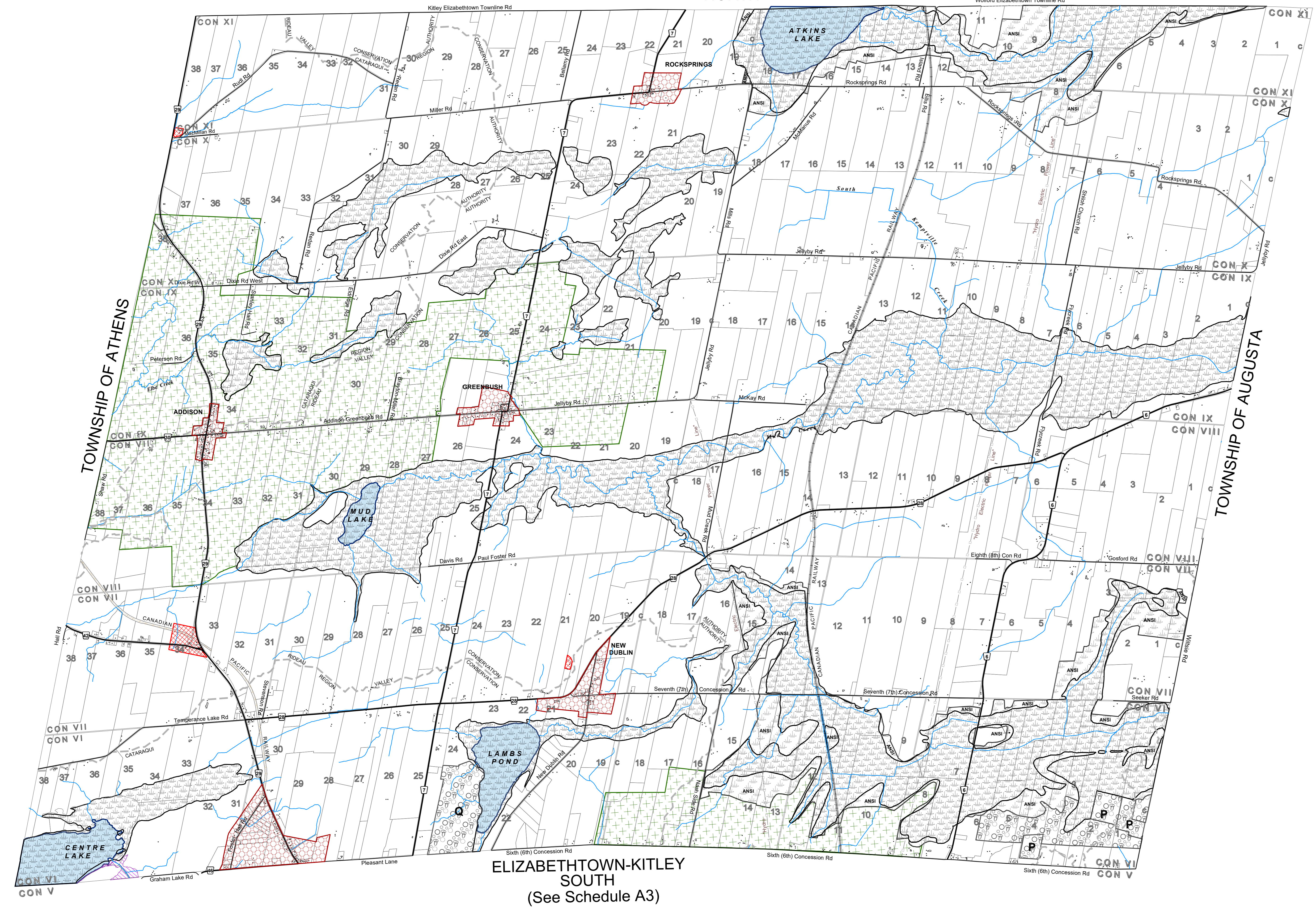


# OFFICIAL PLAN

## SCHEDULE A2 - LAND USE & ROADS

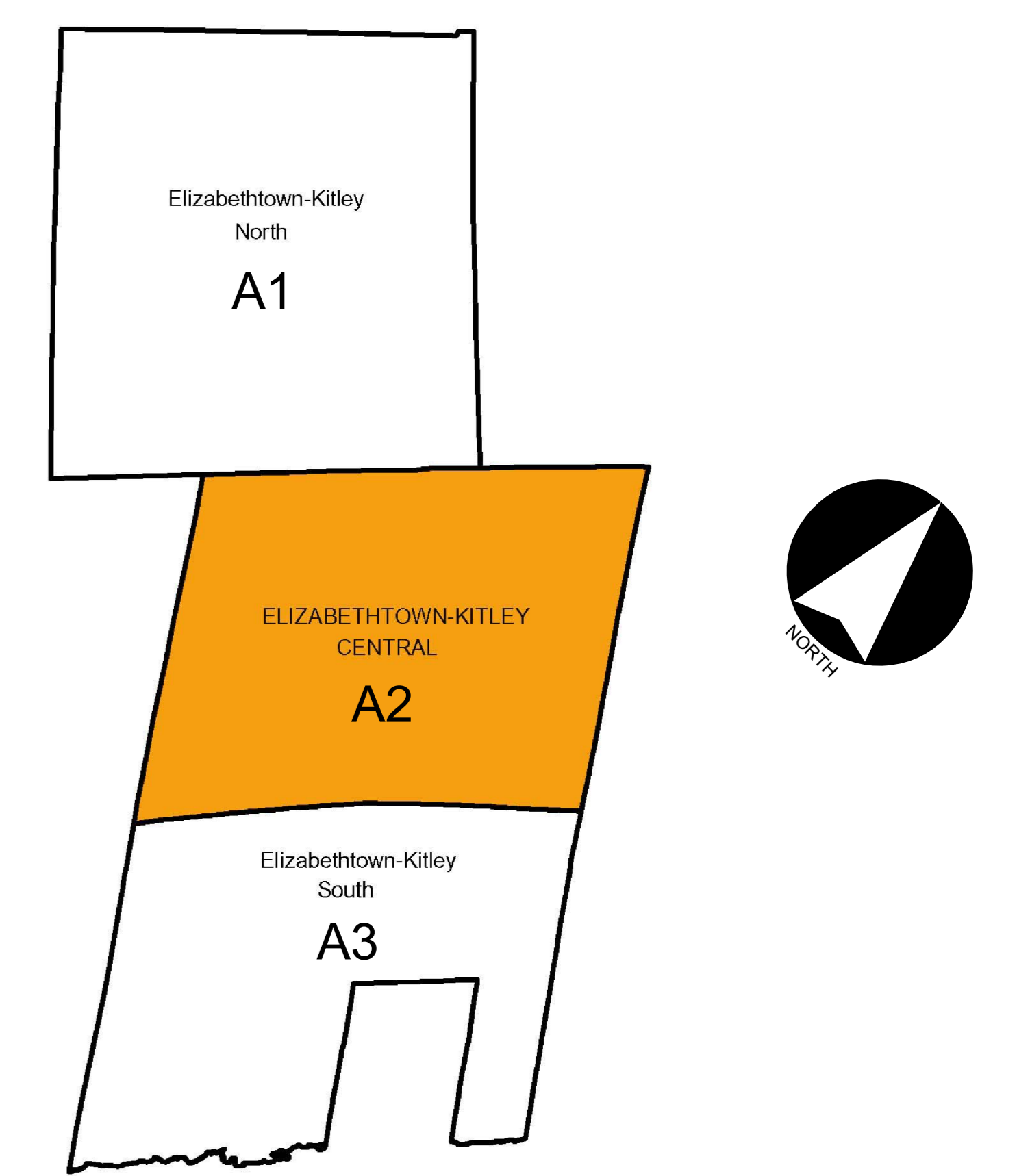
### ELIZABETHTOWN-KITLEY CENTRAL

(See Schedule A1)  
ELIZABETHTOWN-KITLEY NORTH



ELIZABETHTOWN-KITLEY SOUTH  
(See Schedule A3)

#### KEY PLAN

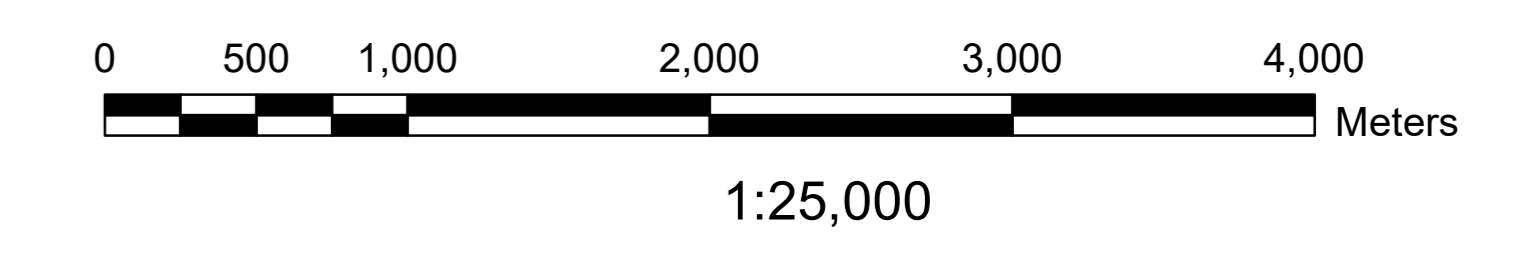


#### LAND USE

- |                                      |                       |
|--------------------------------------|-----------------------|
| Agriculture                          | Rural                 |
| Natural Heritage - PSW               | Settlement Area       |
| Natural Heritage                     | Residential           |
| Mineral Resource - Mineral           | Commercial            |
| Mineral Resource - Mineral Aggregate | Industrial / Business |
| Natural Hazard                       |                       |
| P Licensed Pit                       |                       |
| Q Licensed Quarry                    |                       |

#### ROADS

- Provincial Highway
- County Road
- Township Road
- Private Road
- Abandoned Railway
- Active Railway



ISSUE DATE: DECEMBER, 2018

**NOVATECH**  
Engineers, Planners & Landscape Architects  
Suite 200, 240 Michael Cowpland Drive  
Ottawa, Ontario, Canada  
K2M 1P6  
Telephone (613)254-9643  
Facsimile (613)254-5867  
www.novatech-eng.com

THIS PLAN IS BASED UPON INFORMATION OBTAINED IN MAY 2017 THROUGH A DIGITAL DATA RELEASE AGREEMENT WITH THE UNITED COUNTIES OF LEEDS & GREENVILLE AND INCLUDES DATA FROM THE PROVINCE OF ONTARIO'S ONTARIO GEOSPATIAL DATA EXCHANGE DATABASE (LAND INFORMATION ONTARIO), MUNICIPAL PROPERTY ASSESSMENT CORPORATION AND TERANET INC.