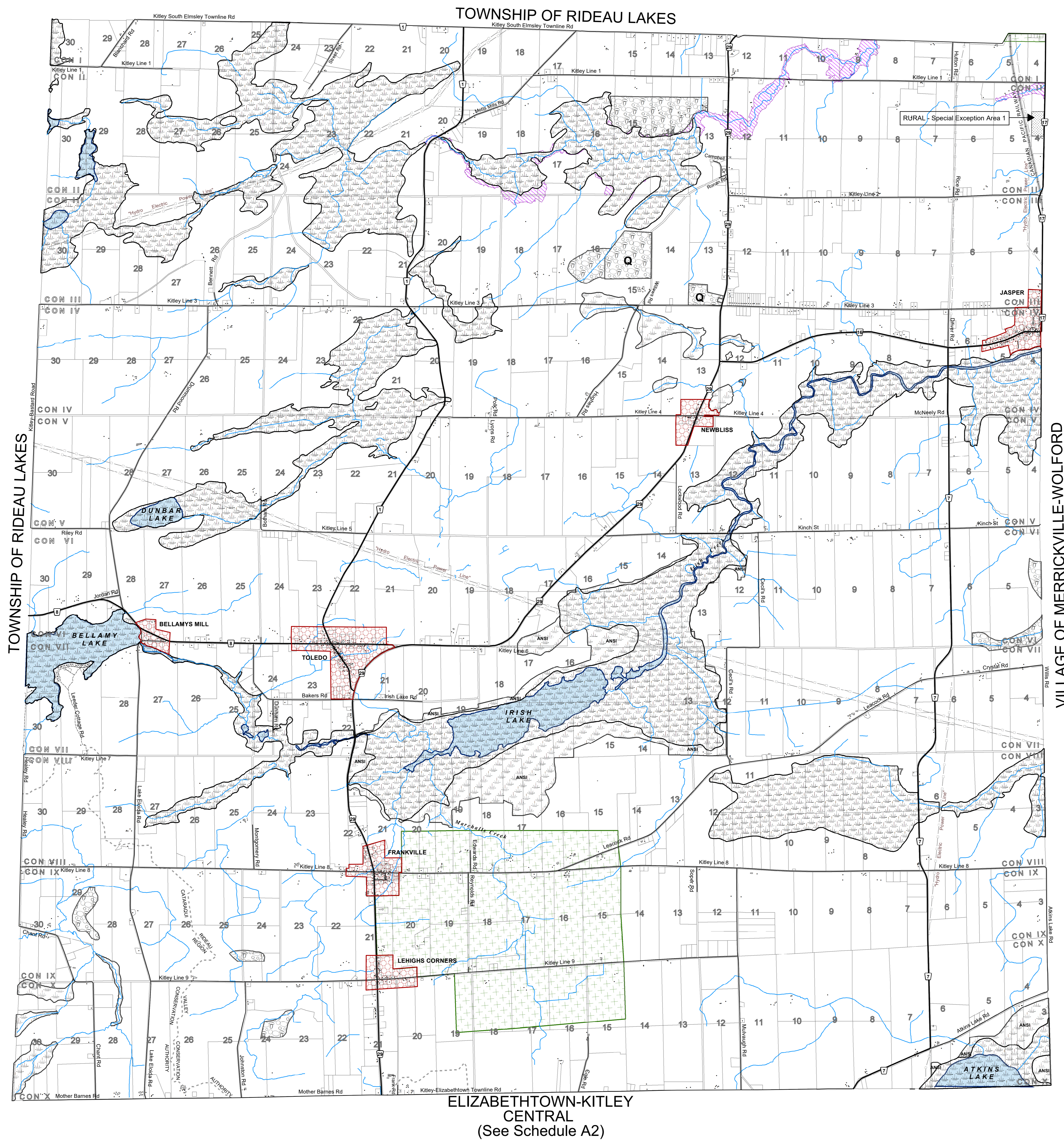
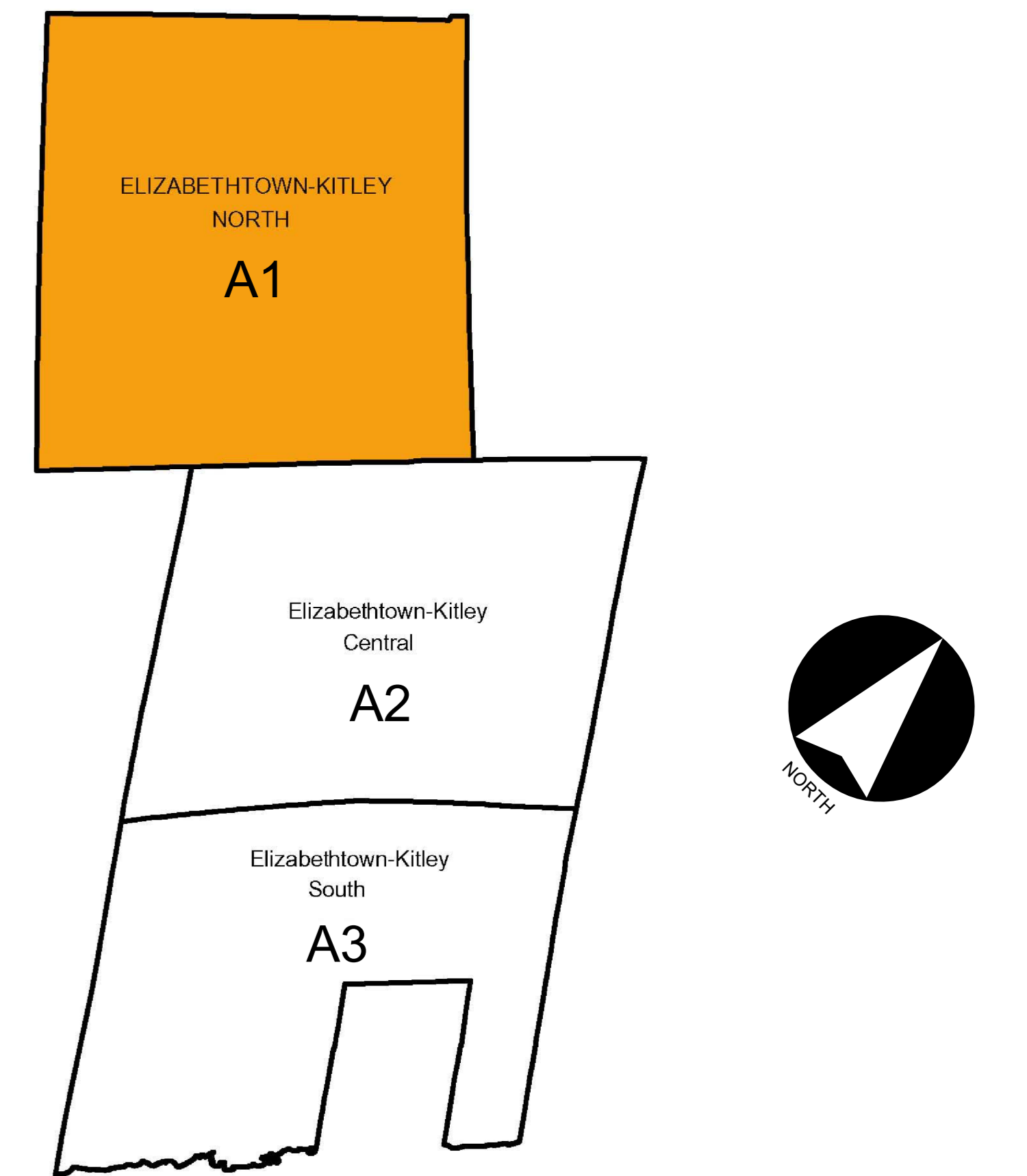


OFFICIAL PLAN

SCHEDULE A1 - LAND USE & ROADS

ELIZABETHTOWN-KITLEY NORTH

KEY PLAN

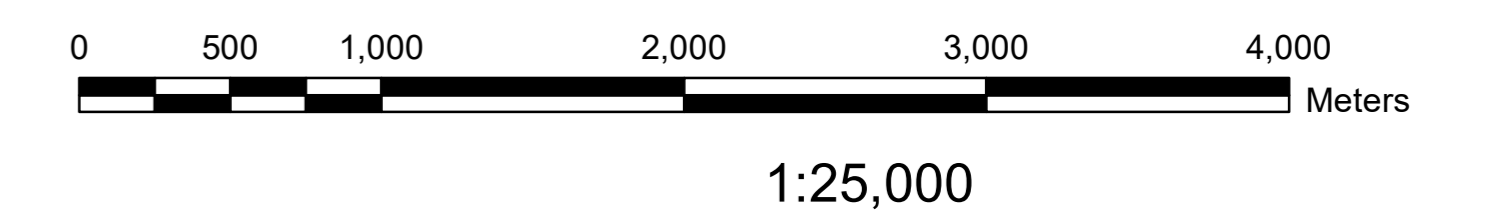


LAND USE

- Agriculture
- Natural Heritage - PSW
- Natural Heritage
- Mineral Resource - Mineral
- Mineral Resource - Mineral Aggregate
- Natural Hazard
- Licensed Pit
- Licensed Quarry
- Rural
- Settlement Area
- Residential
- Commercial
- Industrial / Business

ROADS

- Provincial Highway
- County Road
- Township Road
- Private Road
- Abandoned Railway
- Active Railway



ISSUE DATE: DECEMBER, 2018

NOVATECH
Engineers, Planners & Landscape Architects
Suite 200, 240 Michael Cowpland Drive
Ottawa, Ontario, Canada
K2M 1P6
Telephone (613)254-9643
Facsimile (613)254-5867
www.novatech-eng.com

THIS PLAN IS BASED UPON INFORMATION OBTAINED IN MAY 2017 THROUGH A DIGITAL DATA RELEASE AGREEMENT WITH THE UNITED COUNTIES OF LEEDS & GREENVILLE AND INCLUDES DATA FROM THE PROVINCE OF ONTARIO'S ONTARIO GEOSPATIAL DATA EXCHANGE DATABASE (LAND INFORMATION ONTARIO), MUNICIPAL PROPERTY ASSESSMENT CORPORATION AND TERANET INC.

ELIZABETHTOWN-KITLEY
CENTRAL
(See Schedule A2)