

Fire Safe Student Housing

TOP TIPS for staying fire safe at college or university

COOKING is the leading cause of home fires

- **Stand by your pan**—always stay in the kitchen and stay alert when cooking.
- Keep **anything** that burns—*pizza boxes, dishtowels, paper towels, wooden or plastic spoons and pot holders*—a safe distance away from the stove.

ELECTRICAL EQUIPMENT—overloaded circuits and octopus wiring are dangerous

- Use power bars with a **circuit breaker and surge protector**. Ensure the power bars have the logo of an accredited product safety testing agency such as **CSA** or **ULC**.
- Avoid using extension cords as permanent wiring.
- Making sure electrical cords are not covered by carpets or rugs where they can be easily damaged.

CANDLES can add ambiance—they also can lead to a fire

- **Never leave a burning candle unattended.** Blow out all candles before leaving the room or going to bed.
- Consider using **battery-operated flameless candles**.
- Place candles in sturdy, safe candle holders that will not burn or tip over.
- Keep candles at least 30 centimetres from anything that can burn.
- Avoid using candles in bedrooms.



SPACE HEATERS NEED SPACE

- Keep space heaters at least **one metre away** from anything that can burn, such as paper, bedding, furniture and curtains.
- Turn off space heaters before going out or going to bed.

SMOKING is the leading cause of fatal fires

- Encourage smokers to smoke **outside**.
- Keep **large, deep ashtrays** on hand.
- If anyone has been smoking, **check for cigarette butts**, especially under pillows and cushions — sofas and chairs can burn fast!

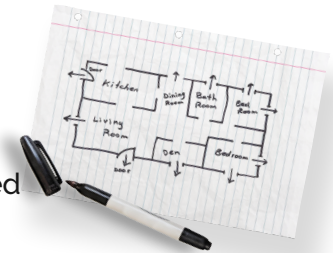
SMOKE AND CARBON MONOXIDE ALARMS—It is the law to have working smoke and carbon monoxide alarms in your home:

- **Test alarms monthly** by pressing the TEST button and notify the landlord immediately if they are not working.
- It is **against the law** for tenants to disable or tamper with a smoke or carbon monoxide alarm.
- If a smoke alarm activates due to steam from the shower or cooking on the stove, oven or toaster, ask the landlord to move the alarm to a different location, or to install a smoke alarm with a hush feature.



HOME FIRE ESCAPE PLANNING—When the smoke alarm sounds, everyone must know what to do and where to go. Make a plan!

- Know **two ways out** of every room, if possible. The first way out would be the door, while the second way could be a window that can be exited safely. All escape routes must be accessible and free of clutter.
- Leave the building as quickly as possible. **Never re-enter a burning building.**
- Call **9-1-1** from outside the building using a cell phone or a neighbour's phone.



For more information contact your **local fire department**.



Office of the Fire Marshal and
Emergency Management
ontario.ca/firemarshal