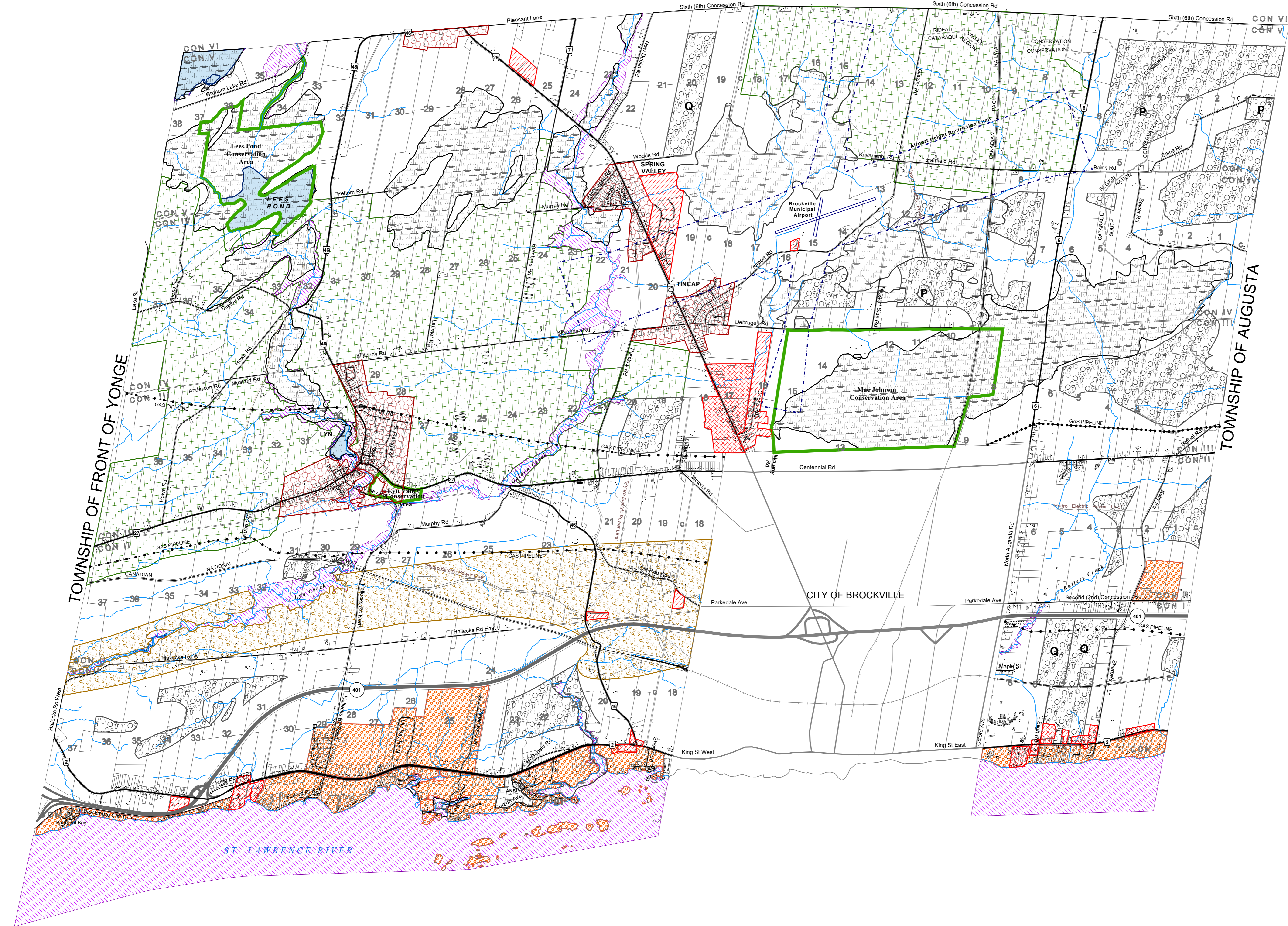


OFFICIAL PLAN

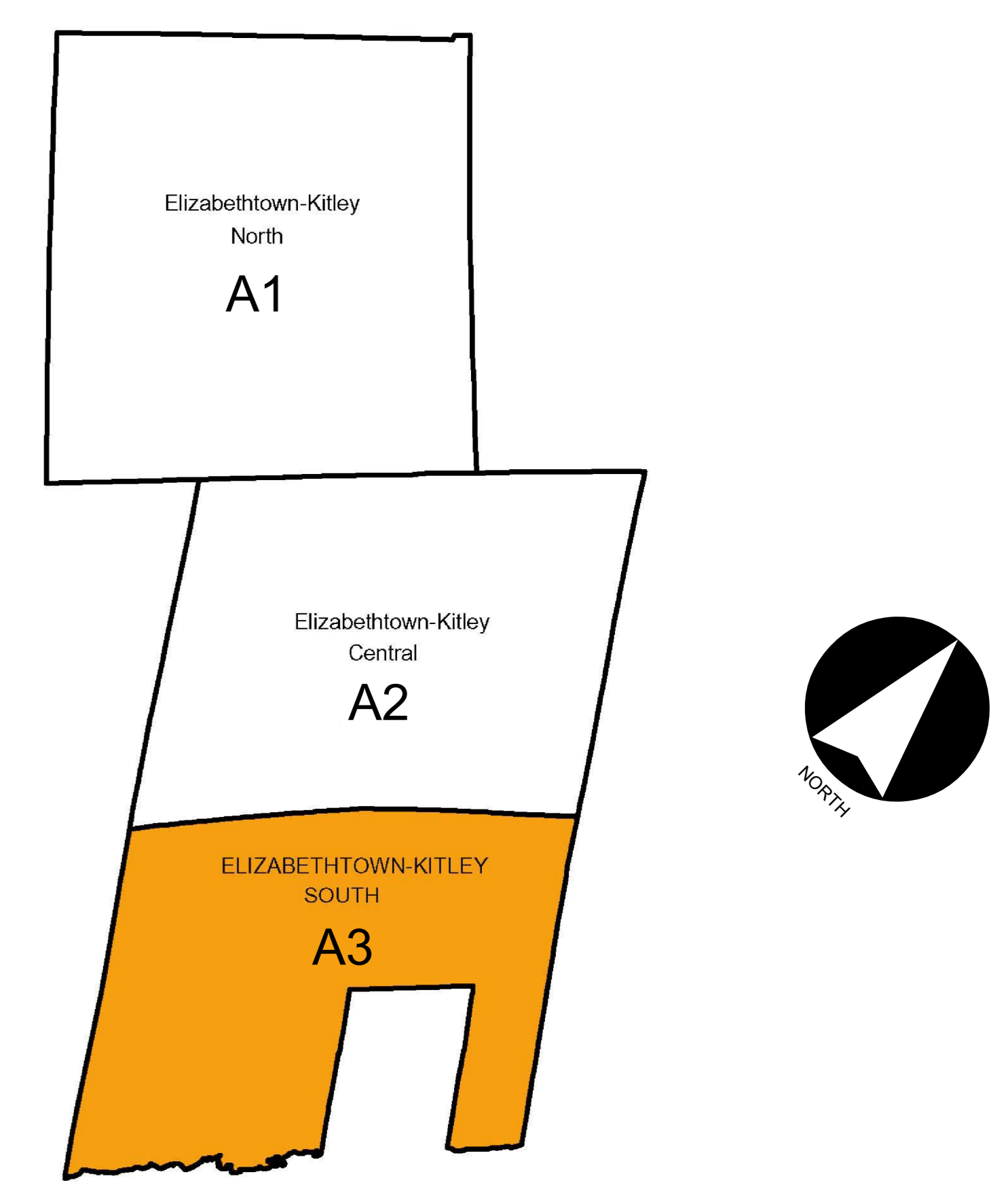
SCHEDULE A3 - LAND USE & ROADS

ELIZABETHTOWN-KITLEY SOUTH

ELIZABETHTOWN-KITLEY CENTRAL
(See Schedule A2)



KEY PLAN

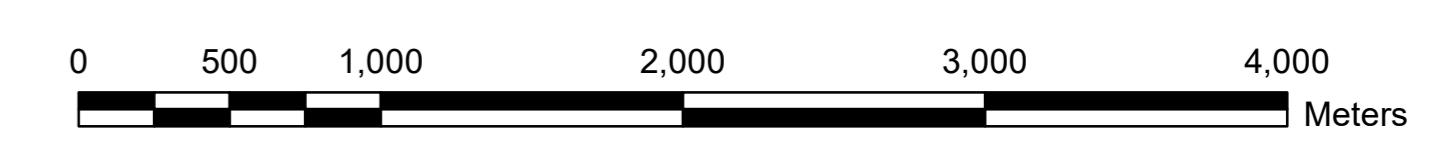


LAND USE

- | | |
|--------------------------------------|-----------------------|
| Agriculture | Rural |
| Natural Heritage - PSW | Settlement Area |
| Natural Heritage | Residential |
| Mineral Resource - Mineral | Commercial |
| Mineral Resource - Mineral Aggregate | Industrial / Business |
| Natural Hazard | |
| Licensed Pit | |
| Licensed Quarry | |

ROADS

- Provincial Highway
- County Road
- Township Road
- Private Road
- Abandoned Railway
- Active Railway



1:25,000

NOTE: FOR LANDS ALONG THE ST. LAWRENCE RIVER, THE LIMIT OF THE NATURAL HAZARD DESIGNATION SHALL BE THE 75.8m (GSC) ELEVATION. FOR DETAILED INFORMATION WITH RESPECT TO 1:100YR FLOOD PLAIN LIMITS, SEE THE RELEVANT SECTIONS OF THE OFFICIAL PLAN & CONSULT DIRECTLY WITH THE CATARAQUI REGION CONSERVATION AUTHORITY.

ISSUE DATE: DECEMBER, 2018

NOVATECH
Engineers, Planners & Landscape Architects
Suite 200, 240 Michael Cowpland Drive
Ottawa, Ontario, Canada
K2M 1P6
Telephone (613)254-9643
Facsimile (613)254-5867
www.novatech-eng.com

THIS PLAN IS BASED UPON INFORMATION OBTAINED IN MAY 2017 THROUGH A DIGITAL DATA RELEASE AGREEMENT WITH THE UNITED COUNTIES OF LEEDS & GREENVILLE AND INCLUDES DATA FROM THE PROVINCE OF ONTARIO'S ONTARIO GEOSPATIAL DATA EXCHANGE DATABASE (LAND INFORMATION ONTARIO), MUNICIPAL PROPERTY ASSESSMENT CORPORATION AND TERANET INC.