



**CAMPUS
HABITATIONS**

PRESS KIT

ELIZABETHTOWN-KITLEY

PRESS RELEASE
DECEMBER 20, 2023





About Us

Campus Habitations' mission is to deploy a scalable and repeatable model of fully furnished rental apartments across multiple locations, capitalizing on the inherent economies of scale in our branded and standardized approach, with a particular focus on markets grappling with severe undersupply.

www.CAMPUSHABITATIONS.com



FOR IMMEDIATE RELEASE

****Campus Habitations Announces Exciting New Project in Elizabethtown-Kitley Township****

Elizabethtown-Kitley, [December 20, 2023] – Campus Habitations proudly announces the launch of an innovative multi-residential development in the township of Elizabethtown-Kitley. Situated within the Fairground lands at Row's Corners, this ambitious project spans a 29.6-acre site, and promises to be a landmark addition to the region.

The project is planned to unfold in multiple phases, with the inaugural phase targeting the creation of 140 thoughtfully planned apartment units. An important milestone was achieved with the submission of the site plan approval application to the township on December 15, initiating a pivotal phase in the project timeline. Co-founders Marc Koran and Raffaele Freddi are enthusiastic about unveiling the project to the public at this early stage, recognizing the importance of sharing the project vision with the community. “Despite challenges including final site plan approval and arrangements for necessary infrastructure, our optimism for the project’s success remains unwavering,” states Mr. Freddi.

Phase I involves an investment of over \$35 million, with potential for two more phases. “Incorporating amenities and activities is central to our vision,” adds Mr. Freddi. The development celebrates nature and the beauty of the surroundings with multiple green spaces, including a central park featuring an array of recreational amenities such as an outdoor skating rink, beach volleyball courts, and a basketball court. The thoughtful inclusion of walking trails, hiking paths, and tranquil forest walkways on the site fosters an environment where current and future residents can enjoy a living experience immersed in nature and amenities.

The project is a response to the pressing need for employee housing in the area, a challenge that significantly impacts local businesses and healthcare professionals. The development's efficient design features 1, 2, and 3-bedroom layouts, with each bedroom having its own private bathroom to enhance privacy and convenience. Campus Habitations remains committed to affordability, aligning with the support of the Canada Mortgage and Housing Corporation (CMHC) and upholding their standards, as exemplified in their other ongoing projects.

This initiative, developed in collaboration with the St Lawrence Corridor Economic Development Commission, has not only been well received by the township and local businesses, but has also welcomed its first local partners, David Beatty and Shelley Bacon. Esteemed members of the local community, Beatty and Bacon’s involvement extends beyond mere financial contributions. They bring a wealth of local insight and strategic guidance, helping set a strong foundation for this transformative project. “David and Shelley’s support is a clear reflection of the community’s faith in and commitment to our vision,” affirms Mr. Koran.

continued...

Subject to approvals, which have so far received strong support from Mayor Burrow and the township, Campus Habitations aims to commence construction in the second quarter of 2024. The first phase is expected to be completed within 15 months, with the first residents moving in by summer 2025.

Campus Habitations specialises in addressing the accommodation shortage in Ontario and Quebec. Their innovative model meets the growing demand for accessible workforce and student housing, maintaining consistent brand standards across various locations. Their ground-up, scalable, multi-residential design is tailored to meet local market needs.

For more information, please contact:

Raffaele Freddi

raffaele@campushabitations.com

514-893-8448





LIVING-KITCHEN
rendering



BEDROOM
rendering



BATHROOM
rendering

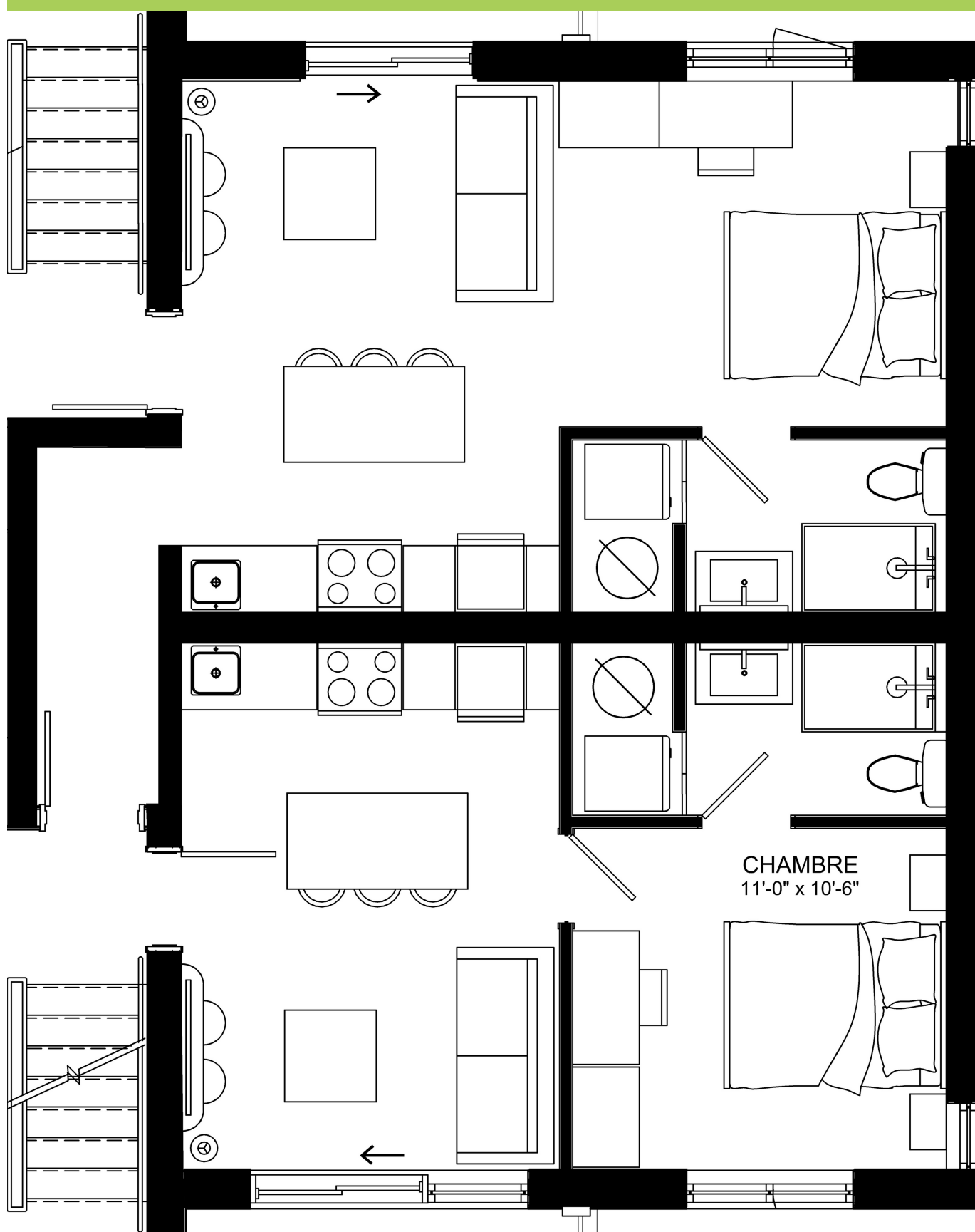


EXTERIOR
renderings



Apartment layouts

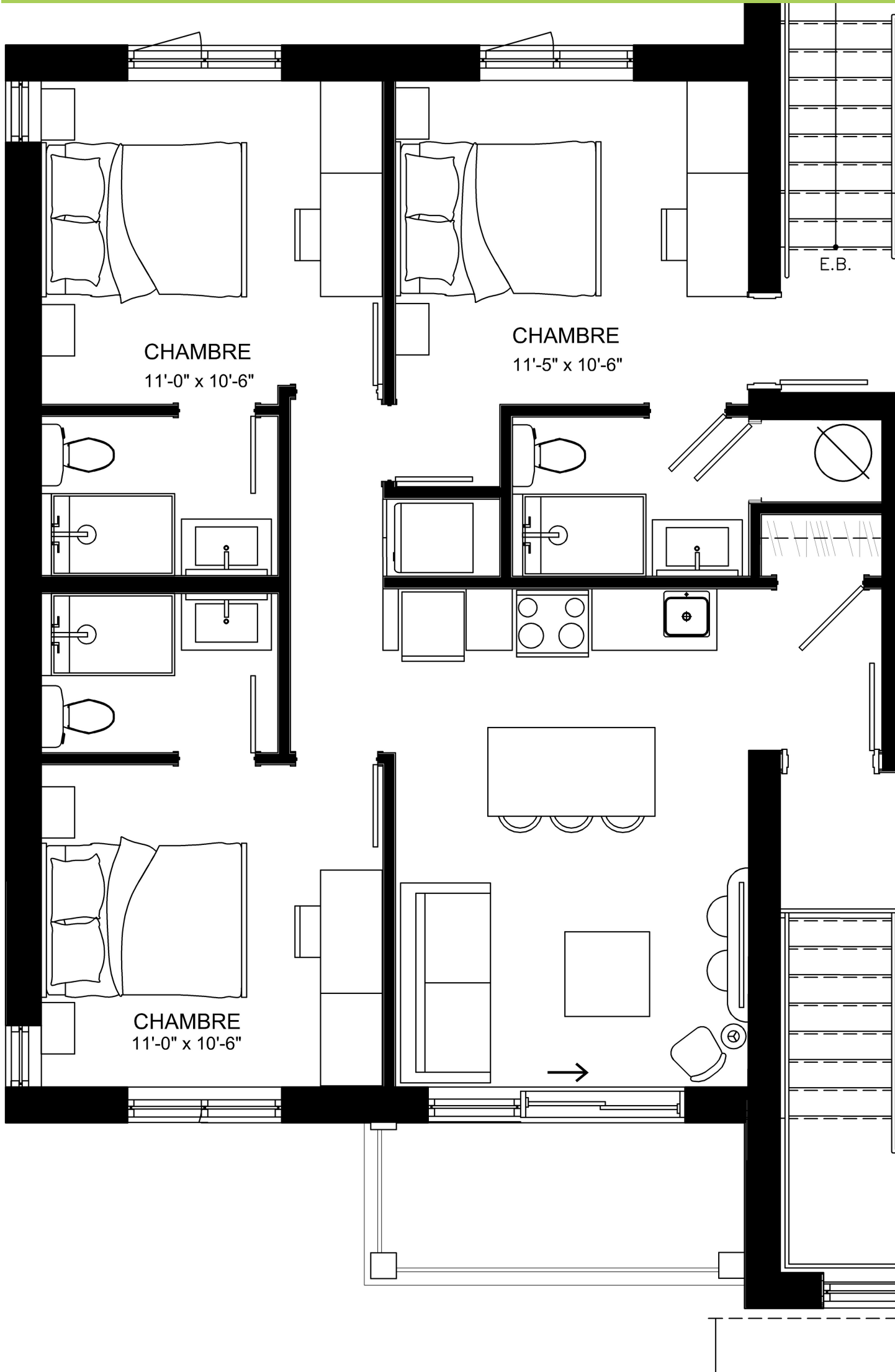
NEW YORK
STUDIO
484 SF



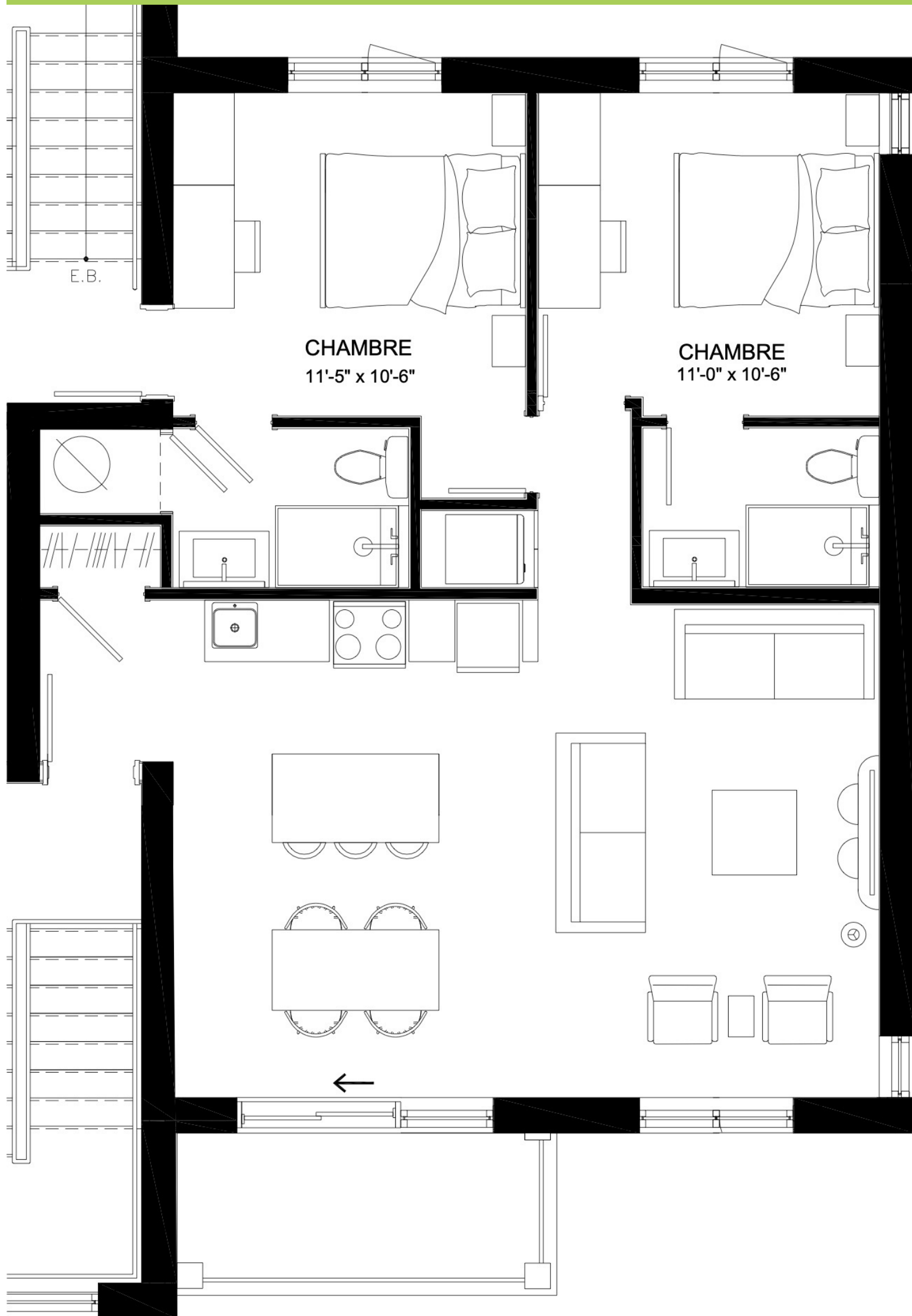
PARIS
ONE-BEDROOM
427 SF

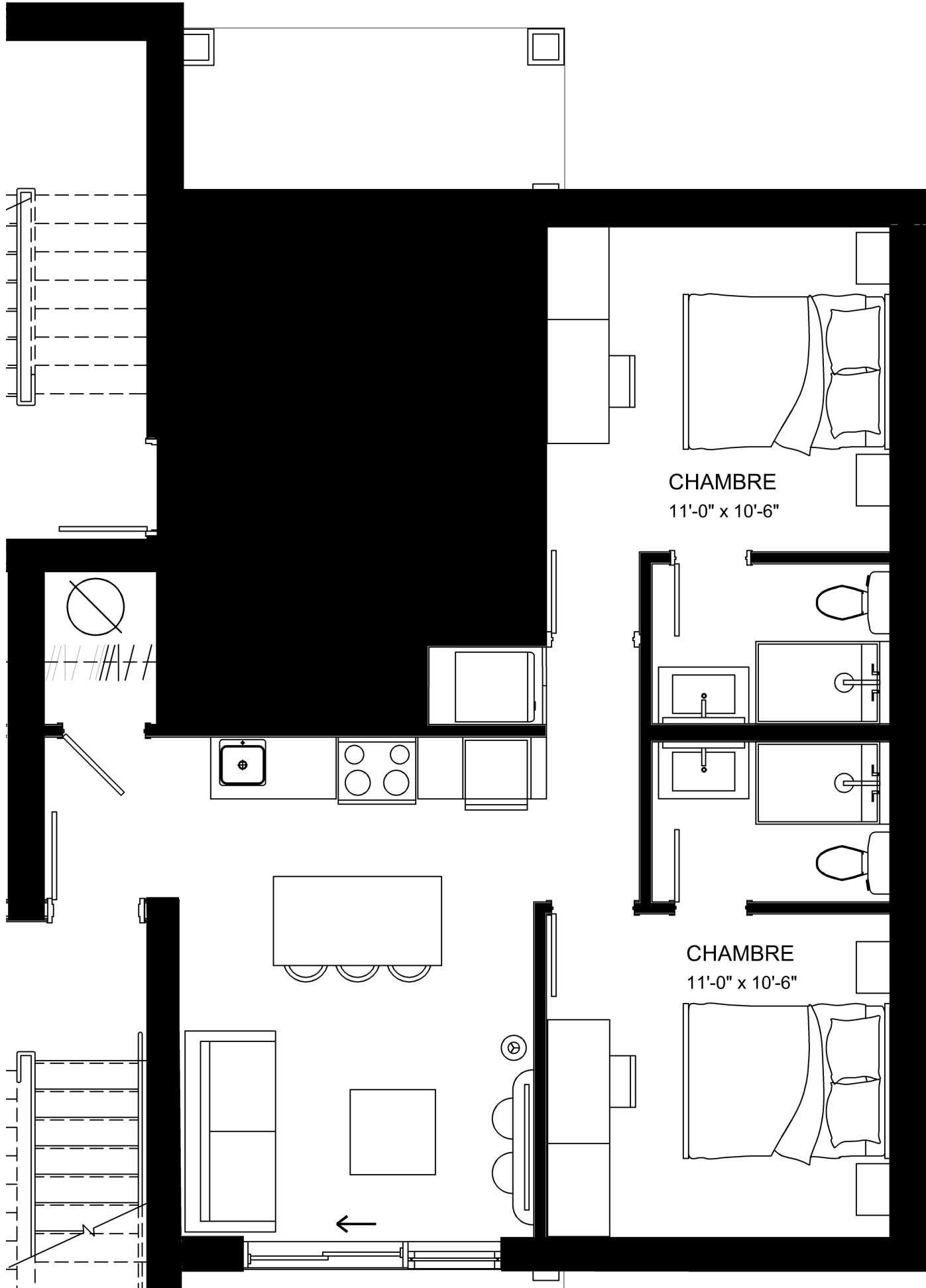


TOKYO
3-SUITES
911 SF



BERLIN
2-SUITES
911 SF





LONDON
709 SF

